

+59% Saving



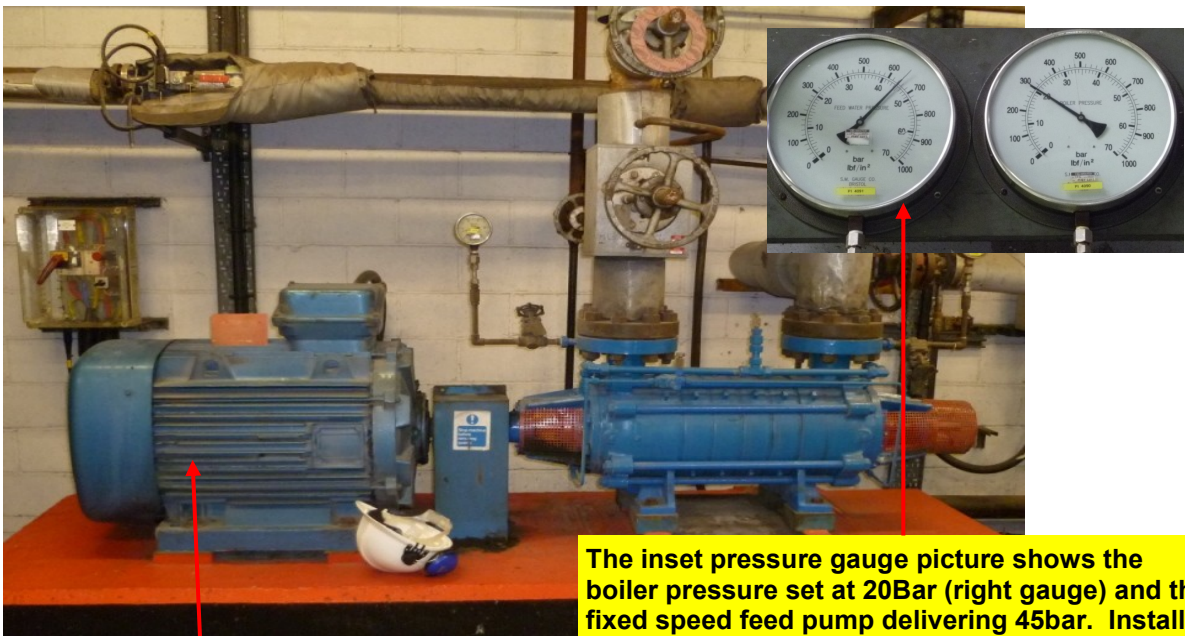
EnerJon

Energy Efficiency

VSD Efficiency Improvement

One of the worlds largest washing powder manufacturers wanted to reduce energy consumption, one of the projects identified by Enerjon was the fitting of Variable Speed Drives (VSD) onto key motor driven equipment on site. This example of a boiler feed pump is one of many VSDs installed on centrifugal pumps. **The project saving achieved paid for the total project cost in under FOUR months.** The project involved:-

- **Full up front costs / saving analysis and summary report.**
- **Identification of all electrical & control requirements.**



110KW boiler feed water pump motor

The inset pressure gauge picture shows the boiler pressure set at 20Bar (right gauge) and the fixed speed feed pump delivering 45bar. Installing the VSD and controlling the speed to achieve a pump pressure of 25Bar will achieve a huge saving

The Results

The VSD will achieve the following benefits once fitted and commissioned:-

- **An incredible +59% reduction in boiler feed water pump motor power, in this case reducing installed motor power load from over 87KWH to under 36KWH.**
- **Annual power savings to the site of 450,186 KWH and reduced annual carbon emissions by over 40 tonnes.**
- **Payback period for all project costs was just under FOUR months.**
- **Other benefits include controlled soft starting of equipment, reducing electrical spikes and mechanical stresses on pump and motor, extended equipment life due to reduced rotations.**

Enerjon

Tel:- (01670) 505898

24hr Mobile (07709) 132566

Email:- jon@enerjon.co.uk