

+67% Saving



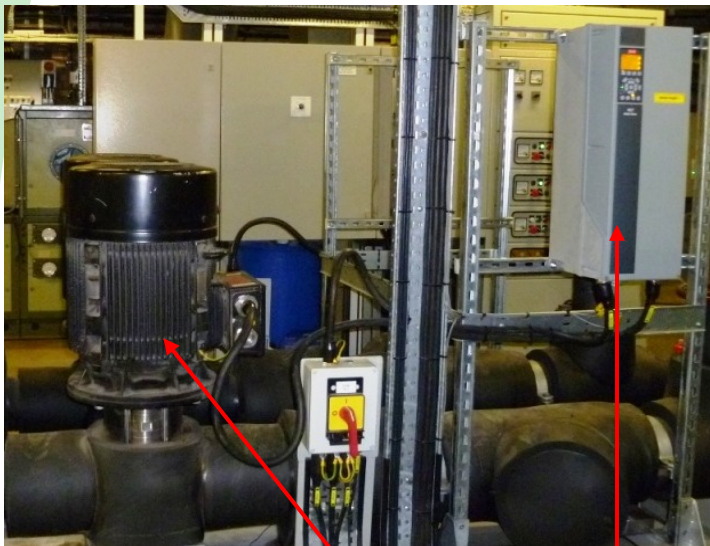
EnerJon

Energy Efficiency

VSD Efficiency Improvement

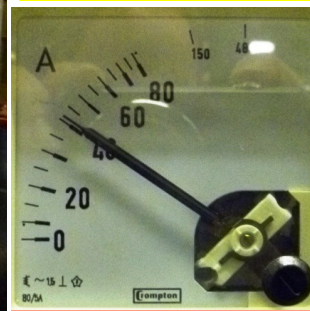
A multi-national organisation wanted to reduce energy consumption, one of the projects identified, installed and commissioned by Enerjon was the fitting of Variable Speed Drives (VSD) onto key motor driven equipment on site. This example of a chilled water circulating pump is one of many VSDs installed on centrifugal pumps. **The project saving achieved paid for the total project cost in under six months.** The project involved:-

- Full up front costs / saving analysis and summary report.
- Identification of all electrical & control requirements.
- Installation and commissioning of the VSD onto the 30KW Chilled water Circulating pump.



30KW Chilled water pump motor fitted with Variable Speed Drive, controlling the pump discharge pressure

Installed motor ammeter shows the impact VSD had on motor running current



Before VSD Install



After VSD Install

The Results

The installed VSD achieved the following improvements:-

- An incredible 66% reduction in CHW water pump motor power, in this case reducing installed motor power load from over 24KWH to under 8KWH.
- Achieved annual power savings to the site of 96,660 KWH, reduced annual carbon emissions by over 40 tonnes.
- Payback period for all project costs was just under SIX months.
- Other benefits include controlled soft starting of equipment, reducing electrical spikes and mechanical stresses on pump and motor, extended equipment life due to reduced rotations and reduced noise & cavitation of pumped cooling water.

Enerjon

Tel:- (01670) 505898

24hr Mobile (07709) 132566

Email:- jon@enerjon.co.uk